



Kentucky Educational Development Corporation

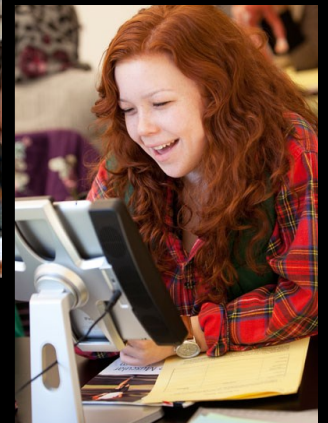
Kentucky Educational Development Corporation

904 Rose Road, Ashland, KY 41102 606.928.0205 800.737.0204

118 James Court, Suite 60, Lexington, KY 40505 859.255.6411

KEDC Services 2013-2014

"KEDC- Your Trusted Partner in Education"





Message from the Director

Greetings, Friend!

Hand in hand with our superintendents, districts and schools, KEDC embraces the wonderful opportunity to pursue excellence in leading, teaching and learning!

As the oldest and best co-op in the Commonwealth of Kentucky, KEDC has earned the regard of educators across the nation, and I am excited as its leader to welcome each challenge we may face. For nearly 10 years as a superintendent, I experienced the trials and triumphs of leading a district. As a member of the KEDC Board of Directors, I listened to others describe the needs of their schools and communities.

Now, I am resolved that KEDC will provide the remedies for these issues to the greatest extent possible. It is my goal to expand our services, provide excellent customer consideration and lead an organization that is both educationally and fiscally responsible.

Our plan brings change and excitement to member districts. Our work began with expanding our Instructional Support Team and continues to grow in a variety of critical areas. We have opened an office in Lexington, hired consultants for CIITS, School Finance and American History and expanded our marketing strategies. Our website is state-of-the-art and you can find us on Pinterest and Facebook.

This is only a glimpse into the work and promising future of KEDC!

Be a part of our promise as we lead tomorrow, today!

Your friend,

Nancy
Nancy L. Hutchinson

CEO, KEDC

Did you know....

KEDC has a
Facebook page?

[https://
www.facebook.com
/kedc.org](https://www.facebook.com/kedc.org)



KEDC Board Services

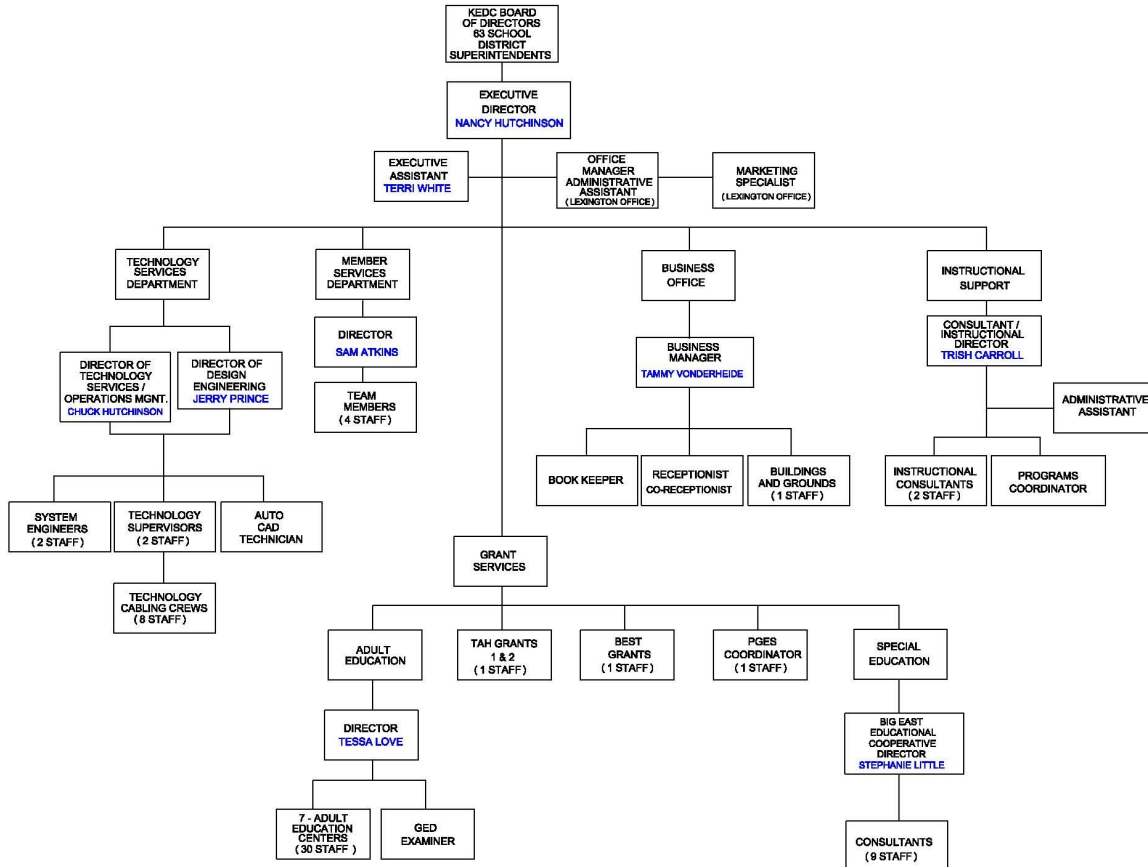
Professional Services
for the KEDC Board of Directors Included In KEDC membership

- Networking and Professional Development Opportunities
- Attorney Consultation – Michelle Williams, KEDC Attorney
- EILA Credit for Participation in Board of Director’s Meetings
- Facility Consultation – Mark Ryles, KEDC Facilities Consultant
- Finance Consultation – Ramona Gardner, KEDC Finance Consultant
- Full Access to Instructional Support Services
- KPC Membership with full Access to Collective Bidding, Purchasing, and Technology Services
- Minority Recruitment Advertising
- MUNIS Support on-site and by telephone
- Salary Surveys and Ranking Reports



Mr. Steve Butcher,
Superintendent–
Pulaski County
Schools,
KEDC Board Chair

KENTUCKY EDUCATIONAL DEVELOPMENT CORPORATION
ORGANIZATIONAL CHART
JULY 16, 2013





KEDC Member Districts

Did you know . . .

KEDC proudly serves

63 Districts

522 Schools

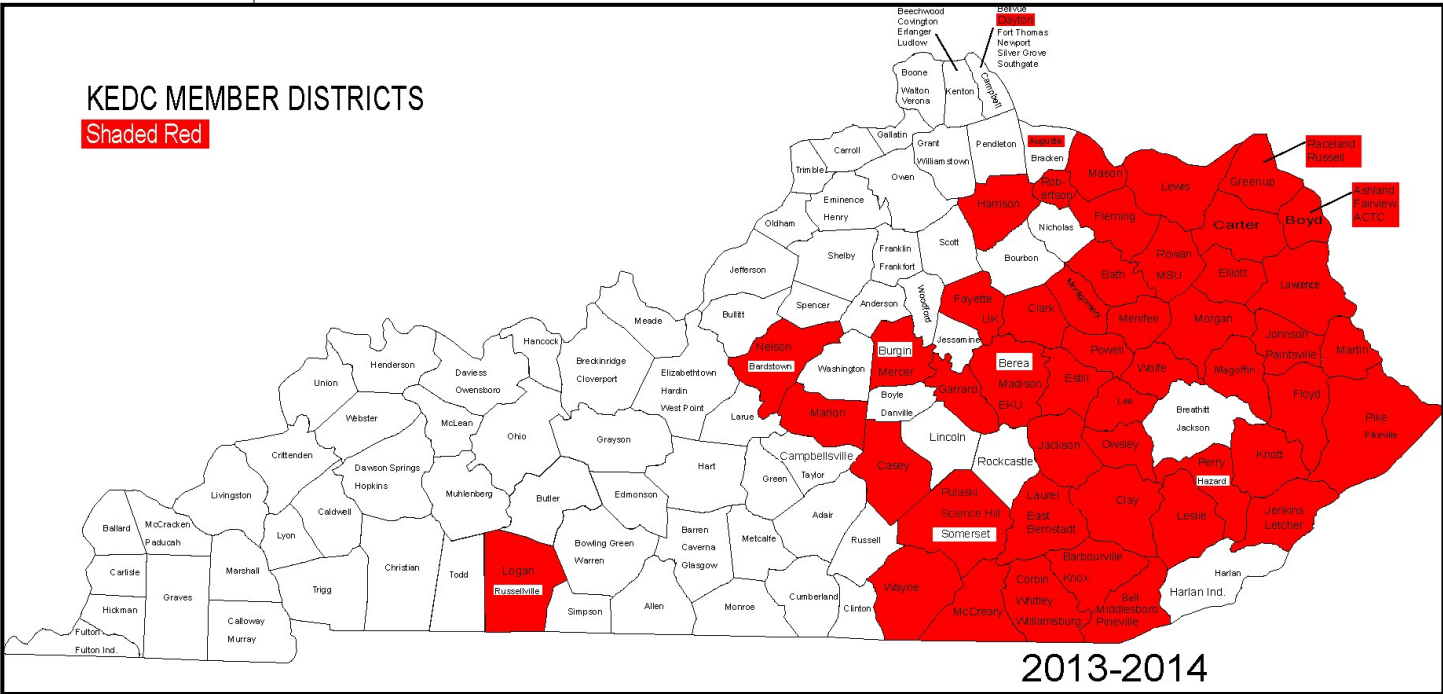
13,936 Teachers

202,175 Students

300+ Board Members

Ashland Independent
 Augusta Independent
 Barbourville Independent
 Bath County
 Bell County
 Boyd County
 Carter County
 Casey County
 Clark County
 Clay County
 Corbin Independent
 Dayton Independent
 E Bernstadt Independent
 Elliott County
 Estill County
 Fairview Independent
 Fayette County
 Fleming County
 Floyd County
 Garrard County
 Greenup County
 Harrison County
 Jackson County
 Jenkins Independent
 Johnson County
 Knott County
 Knox County
 Laurel County
 Lawrence County
 Lee County
 Leslie County

Letcher County
 Lewis County
 Logan County
 Madison County
 Magoffin County
 Marion County
 Martin County
 Mason County
 McCreary County
 Menifee County
 Mercer County
 Middlesboro Independent
 Montgomery County
 Morgan County
 Nelson County
 Owsley County
 Paintsville Independent
 Perry County
 Pike County
 Pikeville Independent
 Pineville Independent
 Powell County
 Pulaski County
 Raceland-Worthington Independent
 Robertson County
 Rowan County
 Russell Independent
 Science Hill Independent
 Wayne County
 Whitley County
 Williamsburg Independent
 Wolfe County



KEDC Marketing Program

Marketing Message:

Unlike traditional marketing that sells something to make money, KEDC marketing wants to help save you money!

Working with all KEDC departments and consultants, our marketing specialist presents a package of support for districts and schools. Recently, KEDC learned that several of our members were purchasing materials, equipment and supplies at full costs. By using KPC, these same purchases can be bought with 10% - 35%, and in some cases 70% SAVINGS! Call our member services division for HELP. Since KPC is available for any non-profit agency, our marketing specialist will be actively recruiting potential members. All non-profit and government entities are eligible to participate for free. This means that religious groups, state and local government services, libraries and many others can receive the same discounted prices as schools across the Commonwealth.

For more information about how your organization can participate, contact www.kybuy.org or contact Brittany Porter at KEDC.



Bookmark the KPC online bid book in your browser. Checking the bid book often for approved vendors will assure that all district purchases are being made from a current contract.

Did you know . . .
 When using KPC Bid Contract Pricing — Member districts need to make certain to mark on all purchase orders that they are using a KPC contract to ensure the correct pricing. Some vendors require a specific contract number and this will be noted on their listing in the KPC bid book at www.kybuy.org.

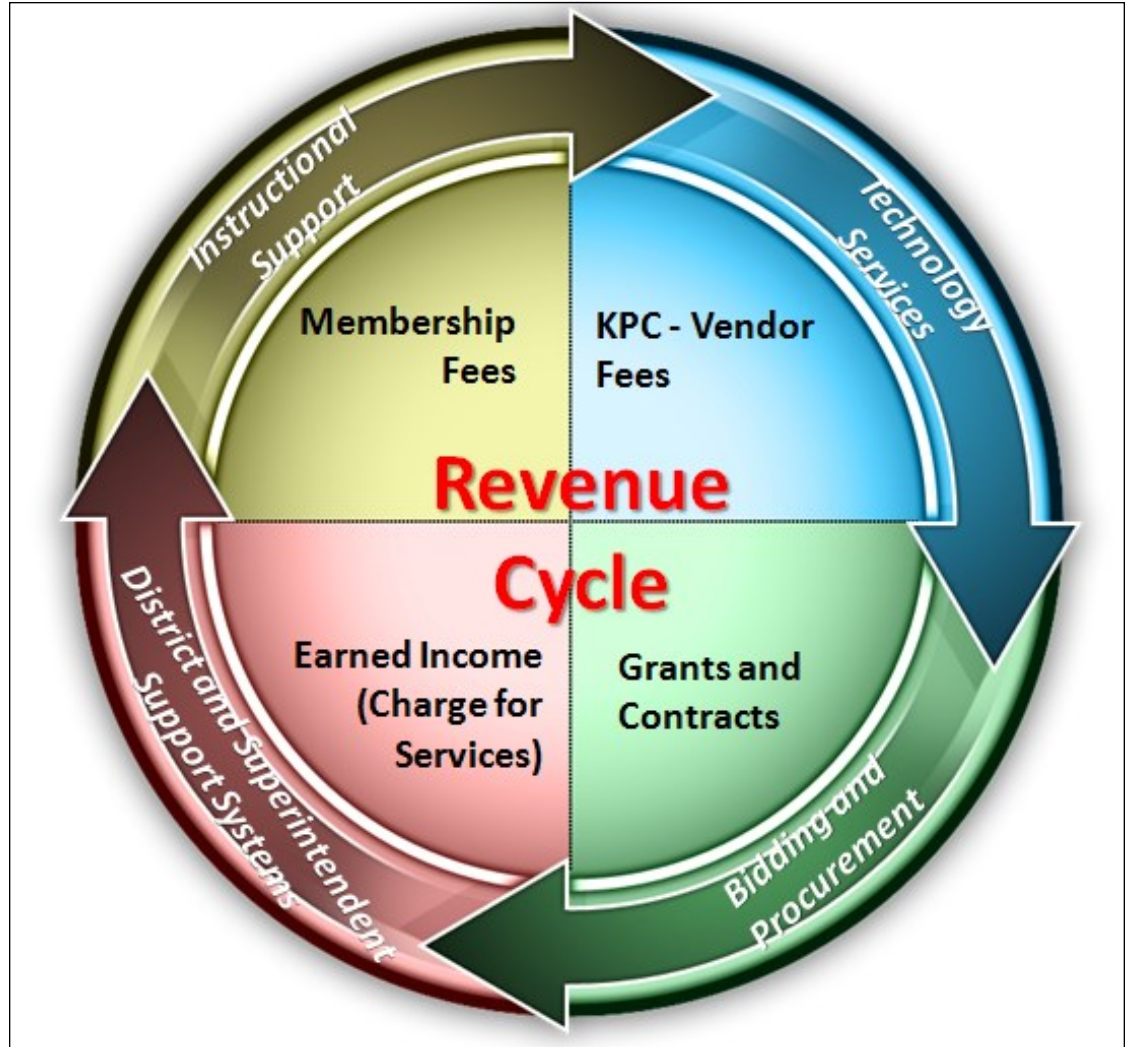
Brittany Porter
Marketing Specialist
859-619-1776
brittany.porter@kedc.org





KEDC Revenue Cycle

KEDC's promise to you:
 Member districts regain the cost of membership fees through savings from purchasing products and services from KPC Vendors.



KEDC is proud of the way our revenue supports districts and membership fees cycle to provide direct support. We offer quality assistance through Instructional Support and Technology Services.

Did you know . . .

The Kentucky Educational Development Corporation, or KEDC, is Kentucky's oldest and largest educational cooperative. Founded in 1965, KEDC has grown to include over 60 school districts, colleges and universities in its membership. KEDC exists to provide educational support services for its members in line with our mission of "Your Trusted Partner in Education". A few of the services we provide are: technology wiring, full collective bidding services, special education support, professional development opportunities for all school employees, adult education services in seven counties, and leadership development.

Instructional Support Services

The KEDC Instructional Support Team has expanded to include initiatives of critical importance to our members. Guided by the mission and vision adopted by our superintendent Board of Directors, team members coordinate cadre meetings, facilitate training sessions and hone the creative edge of educational practice. Throughout, the focus on instruction guides us. As representatives of KEDC, the team participates in training intended for districts and schools that we might serve the corporation and its members.

KEDC Instructional Support Team

Trisha Carroll,
Leadership
Consultant

Sue A. Davis,
Leadership
Consultant

Donetta Trimble,
Programs
Coordinator

Charles Rutledge,
PGES Consultant

Clabe Slone,
Consultant, The
American History
Grant

Tony Streeval,
Project BEST
Consultant

Tiffany Lavoie,
Instructional
Technology
Consultant





Instructional Support Services

District Support District Assessment Coordinators Cadre – on a monthly basis, DAC’s from member districts meet in Ashland and London to discuss issues specific to coordinating the tasks for district and school assessments. Facilitated by members, the cadre is one of the longest, continuing cadres to meet under the auspices of KEDC.

Professional Development Coordinators Cadre – bimonthly, PDC’s gather to learn about initiatives pertinent to their roles as leaders for professional development in their districts. Closely reviewing expectations from federal, state and local governing bodies, the PDC’s use this opportunity to network and share ideas that are working in their districts.

Role Group Cadres – the Counselors’ Cadre and Gifted/Talented Cadre are very self-directed. With leaders from the groups planning and facilitating their meetings, they stay in touch with current research. Also included this year is a CIITS Cadre

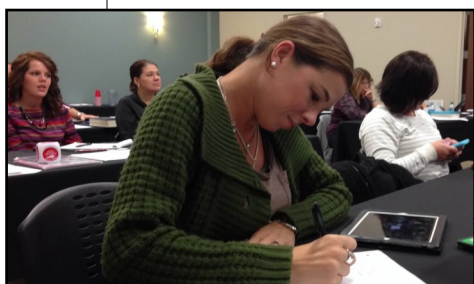
with Vickie Elswick and the Title I Cadre facilitated by Amy Jacobs, KDE.

Leadership The Principals Network – The Principals Network provides the chance for school leaders to learn from experts about policies and successful practices for student achievement. The role of the principal is highlighted as the nearly impossible job it can sometimes be. At the same time, it is celebrated for the trust and confidence that others have in a Principal’s work. Cadres meet in both Lexington and Ashland.

W.I.E.L.D. – Women in Effective Leadership Development is a premier KEDC initiative. Designed for long-time impact, KEDC asks superintendents and other school leaders to identify females whose leadership potential has yet to be tapped. WIELD provides a safe yet rigorous curriculum to help them grow. Meeting 4-5 times per year, leaders for tomorrow gain expertise in 21st century leadership skills.



Did you know. . .
many of the Role Group Cadres were started by and are still facilitated by members?





Instructional Support Services

KEDC Instructional Events

The Closing Achievement Gaps Summit

– Aware of how educators learn from their peers, KEDC invites schools and district to share successful practices that “close the achievement gap.”

Leadership Conference - John Maxwell, Ken Blanchard, Jack Canfield and others have spoken to school and business leaders through a collaboration between KEDC, The University of Kentucky, Fayette County Schools and the Lexington Area Chamber of Commerce. These events usually occur in the fall.

Instructional Improvement – Each summer, KEDC schedules national presenters whose work has had lasting impact on classroom instruction. A frequent partner, Harry Wong has been with us every other summer and is scheduled for July 2014. And Eric Jensen, internationally acclaimed for his research on the brain, will present in June 2014.

School Assistance

School Culture – KEDC Leadership Consultants have created a process by which schools can assess their school culture as it prepares students to be ready for colleges and careers. Using seven domains, teams can be contracted to perform external, third party culture assessments for all levels and configurations of schools.

Focus Schools Planning and Implementation – Understanding the new assessment system and how it identifies where gaps in achievement occur, consultants provide guidance with CSIPs and Program

Reviews.

KDE Collaboration

Content Area Networks – the I.S. Team coordinates the operational aspects of all KDE networks.

The Instructional Support Leadership Network – ISLN meets in Ashland on a quarterly basis, bringing together district and school leaders from across our region. Recent focus has been the Professional Growth and Effectiveness Systems.

Professional Growth and Effectiveness Systems – Assisting principals and teachers in implementing PGES, KEDC consultants support the activities and provide the staff development to make the system a reality.

Content Networks – following the release of Common Core State Standards, KEDC collaborates with KDE to provide support and training for teachers in several content areas. ELA and Math have been the focus for the past 3 years, the Science Network began in September and Social Studies Networks will begin in January. World Languages will also continue to be a focus for KEDC program operations.

KEDC Partners

KLA – KEDC has partnered with KASA to provide operational support since the inception of the Kentucky Leadership Academy.

Morehead State University

Eastern Kentucky University

Ashland Community & Technical College

School Improvement Network-PD360

Teaching American History Grant

KEDC

Instructional

Services Contacts:

Trish Carroll

Trish.Carroll@keduc.org

Sue Davis

Sue.Davis@keduc.org

Donetta Trimble

Donetta.Trimble@keduc.org

606.928.0205

800.737.0204



Did you know . . .

the KEDC Instructional Team is available to work specifically with your focus schools?





Instructional Technology Services

Did you know . . .

For assistance with incorporating Technology in the Classroom you can contact - **Tiffany Lavoie**

Email: Tiffany.Lavoie@kedc.org



Customized Job Embedded Training Programs

- focus on effective delivery of the common core standards through best-fit existing technologies.

Certified Interactive Whiteboard Software training

- including SMART Notebook, Promethean ActivInspire, RM Easiteach, and Interwrite Workspace

Regional Math and ELA Technology Workshops

- combine research-based strategies with best suited technologies for the math classroom to deliver the common core standards for Mathematics.

Blogging and Social Networking in the Classroom

- focus on connecting, collaborating, and formative assessment through these platforms

Podcasting and

Vodcasting - authentic learning opportunities

supporting the top of Bloom's taxonomy

Web 2.0 training

- discover the vast amount of FREE resources available to boost achievement and support the development of 21st Century skills. Available for all content areas and grade levels.

IPads/iPods - how to effectively propel instruction through the appropriate use of these mobile devices.

Student Response Systems

- including SMART Response, Promethean ActivExpression, CPS

Train the Trainer sessions - prepare your district staff to effectively provide training to schools

Instructional Technology hardware - interactive projectors, voice enhancement systems, etc.

Google Apps for Education

- explore what Google Apps can do to open doors for higher level think-

ing and learning - take collaborative learning to the next level.

CIITS - Discover how to expand your district's implementation of CIITS, covering all modules and developing quality lesson plans, resources, and assessments. Another contact for CIITS is KEDC's CIITS Coordinator, Vickie Elswick, Vickie.Elswick@kedc.org.

Instructional Technology Cadre—Build your PLN!

- Focus on supporting instructional technology integration for K-12
- Explore effective use of mobile technology through BYOD, personalized learning environments, etc.
- Discover how to make the most of current technology investments
- Network and share ideas with other districts
- Cadres meet four times (2 locations)
- FREE to KEDC member districts
- EILA credit



Pricing page available upon request.

Pricing includes all travel, expenses, and hard copy materials.

Quantity discounts have been previously observed as follows:
5-9 days 10% discount

10-14 days 20% discount

15+ days 30% discount



Teaching American History Grant

What is TAH?

Teaching American History (TAH)

The TAH Grant was created at the urging of the late United States Senator Robert Byrd of West Virginia to address his concern that students today do not have adequate knowledge of traditional topics in American history. TAH Grant funds are used to provide professional development programs for teachers from kindergarten to twelfth grade in traditional American history topics. The grant presents a tremendous opportunity to provide new, innovative training programs for an underserved population. For the past five years we have been working with two TAH Grants – Free to Learn America's Government (FLAG) and American's Many Trails of Freedom (AMTF).



Teaching American History Network

For the 2013 - 2014 school year, that TAH Grant will extend its cadres and events to teachers throughout the region and state. Teachers not a part of the original TAH Grants may still attend cadre meetings and workshops that meet their needs and interest. With the establishment of the Network, we hope to sustain a communication link for all TAH teachers with a yearly meeting at our Network Summit.

Project BEST (Building Expert Science Teachers)

Project BEST (Building Expert Science Teachers)

is a federally funded grant with a purpose to train teachers on inquiry based learning and STEM implementation in the classroom. School districts currently involved with Project BEST include: **Casey, Jackson, Clay, Estill, Lincoln, Rowan, Bath, Clark, Fayette, Mercer, Pineville, Pulaski, and Garrard.**

PROJECT BEST GOALS

1. To create opportunities for enhanced and on-going professional development of science/math teachers that improves the subject matter knowledge, pedagogical expertise, and leadership capabilities.
 - A. To focus on effective classroom implementation (in support of Kentucky's existing science content standards of the KSCA standards for literacy in science in grades 6-12.
 - B. To focus on number and operations and algebraic thinking as embodied in the KSCA standards for mathematics (K-

- 12), with an emphasis on their connection with mathematical practices.
2. To promote strong teaching skills for mathematics and/or science teachers and teacher educators. Including integrating reliable scientifically based research methods and technology-based teaching methods into the curriculum
3. To establish and operates on-going STEM institutes or professional learning communities for elementary and secondary mathematics and/or science teacher
 - A. Relate directly to the curriculum and academics areas in which the teacher provides instruction, and focus only secondary on pedagogy.
 - B. Enhance the ability of the teacher to understand and use STEM/21st Century Learning Skills; and train teachers to use curricula that are (1) based on scientific research; (2) aligned with Kentucky's Core Academic Standards; and (3) project-based, experiment-oriented, and concept and content base (CHETL).

Did you know . . .

You can get more information on the Teaching American History Grant by contacting Clabe Slone at clabe.slone@kedc.org



Or visiting:

www.tahnetwork.webs.com



For more Information contact Tony Streeval

tony.streeval@kedc.org



Member Services

KEDC is a member of KPC.

- KEDC serves as fiscal agent for KPC.
- Established in 2002, KPC is comprised of 6 educational cooperatives in Kentucky and represents the buying power of over 90% of Kentucky's public schools.
- KPC membership is FREE and open to any non-profit or government entity as evidenced by an over 200 member strong buying power. It includes members across the country.
- Operating under Model Procurement, KPC solicits bids for goods and services to maximize cost savings.
- KPC gives FREE confidential cost comparisons and quotes from multiple vendors.
- The focus of KPC is to support members, vendors and ultimately the students it serves.

Did you know . . .

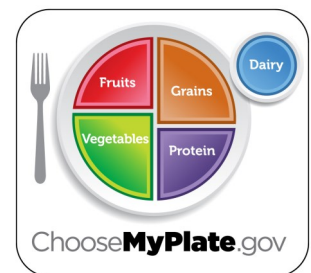
that KPC offers a wide range of categories including:

- Catalog
- Food Service
- Copy Paper
- Construction
- Technology
- Office Supplies

Food Services

KEDC members are eligible to take advantage of the following KPC Food Bid services:

- Prime Vendor Groceries Bid
- Catalog Bids for all other aspects of Food Service (available for quote process)
- Dairy Bids
- Bakery Bids
- Compliance with all requirements (KDE & USDA)
- An expanded item list to limit the need for obtaining additional quotes
- Streamlined item list
 - Obtain better pricing
 - Comply with new meal pattern requirements
- Facilitate trainings
 - Serve Safe
 - Healthy Edge
 - Product testing/sampling
 - Menu planning
 - Key area trainings upon request



Member Services Team Members:

Sam Atkins
Buffy Carter
Sharon Fields
Anne Holt
Toni King
Brittany Porter
Tammy Vonderheide



**Chef Terry Crist—
KPC Summer Nutritional Training**

"I, for one, really appreciate what you do for the Food Service Directors in the state of Kentucky. You make our jobs a lot easier."

Martha Sebring, Gallatin Co. Schools

**For questions about Bidding/Member Services
Please contact our team at**

800-737-0204

Nutrition Analyst

KEDC has contracted with OVEC to utilize Kim Mosser, Nutrition Analyst, to provide group trainings for districts using the KPC Prime Grocery Bid. Contact Sharon Fields (sharon.fields@kedc.org) for more information.



BG-1 Approved Construction Bids

KPC develops bids that are approved for use in school construction or renovation projects. Current or upcoming bids include:

- Spray Urethane Roofing
- Interactive Classroom Technology
- Modified Bitumen Roofing
- Casework
- High Efficiency Lighting
- Gym Flooring

If you have other bids you would like to see developed, please contact Mark Ryles (mryles@ovec.org) or Sam Atkins (sam.atkins@kedc.org).



Facility Cadre touring new Boyd County High School

Technology Bids

KPC has awarded a contract to Anixter to serve the technology needs of our members. This contract meets the requirements for use with the Universal Service Fund (eRate) program. Some of the product categories included on this bid include:

- Structured Cabling
- Video Distribution
- Battery Backups



Copy Paper & Office Supplies

If a member needs a single pencil or a truckload of copy paper, KPC awarded vendors can meet all office supply needs. Current vendors include:

- | Office Supplies | Copy Paper |
|--------------------|-----------------------------------|
| • John R Greene | • Green River Industrial Services |
| • Office Depot | • Petter Business Systems |
| • Office Max | • Xpedx |
| • School Specialty | |

Working with KEDC offers a beginning to end process that is invaluable to schools..... This cooperative is a resource that should be used by every district in Kentucky."

***Jane Smith,
Veterans Park
Elementary***

KPC Membership

All non-profit and government entities are eligible to participate in KPC for **FREE**, which means they can receive the same discounted prices as schools across the Commonwealth. This includes religious groups, state & local government services, libraries, and many others. If you know of any organizations in your community that would benefit from saving time and money please forward Brittany Porter (brittany.porter@kedc.org) their contact information.



Technology Services

Cabling Design Infrastructure of Voice, Data, Video, Audio Visual, Intercom and Security Systems

KEDC can design a KETS standards compliant cabling plant for your school renovation, addition, or new construction project. Services include onsite consultation with you and your architect for free, production of a comprehensive design book, and creation of detailed bid specifications for \$1800.

Wireless Networking

KEDC can design, install, and configure Wireless Networks in Kentucky schools. Our systems engineers and cable installers collaborate to insure the proper placement of each access point to provide complete coverage of your facilities. The price varies by the number of wireless antennas installed.

Cabling Infrastructure Installation

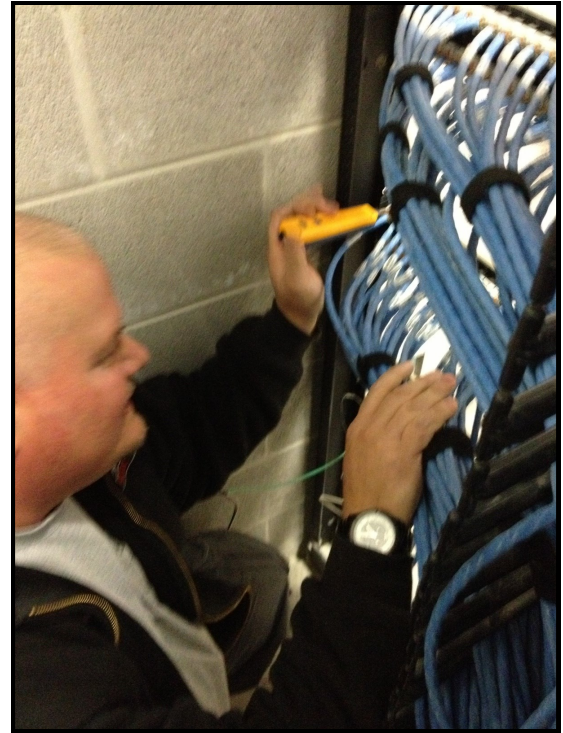
KEDC's wiring teams of Panduit, Belden, & Corning Certified installers can meet all of your data, voice, and video needs through the installation and testing of 100gig, 40 gig, 10 gig CAT 6, CAT 5e, and coaxial cable. The price varies according to the number of voice, data and video drops.

Fiber Optic Cabling Installation

As a Corning LANscape extended warranty provider, we provide a fifteen year non-prorated warranty that guarantees the fiber we install will perform to the manufacturer's specifications. Whether you are looking to connect multiple closets in a building, multiple buildings on a campus, or schools located miles apart, KEDC can help. The price varies according to how long the fiber optic cable run is.

System Engineer Services

Whether you are looking for ongoing server maintenance, assistance with special projects such as new networking hardware rollouts or operating system upgrades utilizing your existing servers, we can help. KEDC's Microsoft Certified Systems Engineers and Certified Network Engineers can be a cost effective



solution for your network needs. Price varies to how many days you use.

FLUKE Diagnostics

The OptiView Series II Integrated Network Analyzer gives KEDC the quick network visibility needed to help you resolve today's network problems faster & smarter. The price varies on the number on days used.

Interactive Classrooms

KEDC can assist you with all of your classroom audio-visual needs. Whether it is interactive white boards, interactive projects, iPads, hand held tablets, pen pads, projectors, sound amplification, or student response systems, KEDC has the expertise to design, install, and configure a system to meet your specifications. The price averages from \$450 to \$500 a room based on the level install.

KEDC – E-rate service Provider

As an experienced e-rate provider, KEDC can help you with a full array of internal connection and basic maintenance services.



Did you know . . . that KEDC has designed and installed 3 VBrick Video Distribution Systems which have video streaming on iPad and other portable devices in the classroom?





Technology Services

Video Distribution

For video distribution to classrooms that are USF eligible, KEDC can design and install systems that utilize components from a Kentucky based distributor.

LAN & WAN Maintenance

KEDC can help with wire management and identification, and updating of wiring closets.

LAN and WAN Components

The Systems Engineers at KEDC are experienced in the installation, configuration, and troubleshooting of network electronics.

Server/Installation & Maintenance

With Microsoft Certified Systems Engineers, Microsoft Certified Professionals, Certified Netware Engineers, and a Master-Certified Netware Engineer on staff, KEDC is capable of handling all of your server needs.

KEDC also offers design, installation, and training for all of your multimedia needs.

TECHNOLOGY SERVICES CONTACT INFORMATION:

Chuck Hutchinson:

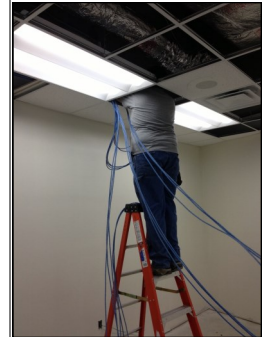
Technology Service
Design Engineer
PH: 606.929.2251
chuck.hutchinson@kedc.org

Jerry Prince:

Director of Technology Services
PH: 606.929.2239
jerry.prince@kedc.org

Teresa Johnson:

Technology Services Assistant
AutoCAD Technician
PH: 606.929.2217
teresa.johnson@kedc.org



*Did you know . . .
that KEDC has an
Electrical Contractor,
Master Electrician,
and licensed
electricians on staff
to aid in your
electrical projects?*





Financial Services

KEDC Finance Consultant services are available to all member districts. Any district staff with finance questions can contact the Finance Consultant. Below is a listing of services that will be expanding as requests are received.

- Year-End Processing & Preparation
- Month End Processing
- Annual Financial Report (AFR) Creation
- Draft, Tentative and Working Budget Creation
- Chart of Accounts (COA) Alignment
- Fixed Asset Reconciliation
- PSD/CSD Processing
- Budget Reduction Ideas
- Financial Trend Analysis
- Bank Reconciliations
- On-behalf Payments Calculations
- SBDM Allocations & Staffing Policies
- School Activity Funds
- Purchase Order Reconciliation
- Assistance in Understanding MUNIS Reports
- General MUNIS Support
- Calculation of Transportation Cost per Mile
- Coding for Debt Service Fund
- Removal of Fund 9 (Long Term Debt Account Group)
- Fund 2 (Special Revenue) or Fund 360 (Construction) Cleanup



The Finance Consultant will also be available for training opportunities, such as Finance Officer Cadre Meetings and New Finance Officer Sessions. Other topics such as the New Redbook, MUNIS 101 and Year-End Close will also be covered in training modules.

A quick financial consultation is a benefit of membership in KEDC. Costs for longer and more involved issues will be determined according to a fee schedule, which is available upon request.

Did you know . . .

that KEDC has a School Finance Officer Cadre and a Payroll Cadre to assist members with up-to-date, just-in-time policies and regulations and to provide valuable networking opportunities?

Ramona Gardner, KEDC Finance Consultant
Ramona.Gardner@keduc.org
606.923.0804 cell
606.929.2226 office



Adult Education Services

KEDC Adult Education

The mission of Kentucky Adult Education is to prepare our students for college and career readiness by delivering a world-class education. KYAE is committed to a quality adult education system that is accountable, efficient and meets the needs of students. Across the Commonwealth, KYAE programs help adult students gain the academic skills and credentials they need to transition to postsecondary education, function productively in the workforce and support their families.



KY Rep Rocky Adkins presents a diploma in Elliott County at the GED graduation

Free Services Offered

- Adult Education
- English as a Second Language
- Family Literacy
- Workforce Education
- Corrections Education
- Kentucky Virtual Adult Education
- Transitions to Postsecondary Education



KEDC Adult Education Centers

Carter County, 606.286.0137
or 606.474.9375
Elliott County, 606.738.5733
Greenup County, 606.473.1091
Lincoln County, 606.365.9665
Martin County, 606.298.0207
Menifee County, 606.768.9741
Mercer County, 859.734.4195

KEDC GED Testing Centers

Carter County, 606.286.0137
or 606.474.9375
Greenup County, 606.473.1091
Menifee County, 606.768.9741

Contessa Love, Director

tessa.love@kedc.org
Phone: 606.929.2215
Fax: 606.929.2115



Did you know . . .

*in 2012-2013
KEDC counties*

*enrolled **1,552
students;***

***716 students**
achieved
academic gains;*

***319 students**
earned GED, and*

***247 students**
earned NCRC
(National Career
Readiness
Certificate)?*

Picture –Front Row

*Left to Right
LeeAnn Branham
(Greenup), Pam
Branam (Menifee),
Tessa Love (KEDC)
Back Row—Vicki
Cline (Martin),
Melissa Rolph
(Lincoln), Vickie
Rose (Carter), Amy
Matthews (Mercer),
Danyelle Simmons
(Elliott)*



Special Education

The **Big East Educational Cooperative** is composed of a multidisciplinary team of educators with expertise in the areas of special education procedures and issues, instructional strategies, literacy, positive behavior interventions & support, classroom management, assistive technology, UDL, complex needs, and secondary transition. Big East provides support services and technical assistance as well as professional development to 22 school districts in Eastern Kentucky.

Support services include technical assistance and consultation with individual teachers, teams, and district staff for a variety of situations which may include:

- Implementing and monitoring special education procedures
- Supporting emergency & probationary certified and new teachers
- Implementing differentiated instruction via literacy & math strategies, co-teaching, PBIS, Kansas Learning Strategies and Content Enhancement Routines
- Providing training, consultation and support on using Assistive Technology and UDL
- Analysis of district & regional data and district assistance with ASSIST/CDIPs and CSIPs.
- Providing training and technical assistance for students with autism, sensory impairments and other complex needs
- Collaboration with other agencies.

Stephanie Little, Director

Stephanie joined the Big East Staff in July, 2012. She brings a repertoire as a Director of Special Education and Preschool with teaching experience in both the special and regular education setting. As Director of Big East, Stephanie provides support to the districts in special education mandates and procedural issues. She assists in legal research and monitoring activities. Stephanie ensures communication and coordination of the cooperative programs and services with district special education directors. She acts as a liaison between the districts and KDE and other agencies, conducts professional development, specific work groups and regular meetings with the district Directors of Special Education.

Did you know . . .

the Big East Special Education Cooperative can Skype into your district, school or classroom for consultation or observations?



Tammy Wall demonstrates a concept during the Conceptual Building Blocks of Math Orientation

Big East Staff

Stephanie Little, Director
 Pam Middleton, Executive Assistant
 Chris Clevenger, Admin Assistant
 Sheila Anderson, Sp Ed Consultant
 Mandy Carter, Low Incidence Consultant
 Lori Dehart, Behavior Consultant

Jon Looney, Assistive Technology Consult
 Tiffany Looney, Literacy Consultant
 Kathy Meredith, Autism Consultant
 Tammy Wall, Math Consultant
 Christi Bailey, KSD Consultant
 Pam Howard, KSB Consultant



Special Education

Special Programs Offered for Students:

Each summer KEDC/Big East Educational Cooperative along with several community partners sponsor **INSIGHT**. This is a unique program designed to provide students who are blind and visually impaired with opportunities and experiences they encounter when entering a post-secondary educational setting. It is open to students who are currently in grades ten through twelve. Participants will acquire an increased awareness of the educational, recreational, and social aspects of post-secondary environment.

Envisioning the Future Days – Students with blindness/visual impairments, their families, teachers, and service providers come together to network and learn from each other at KEDC Ashland. The event is sponsored by Kentucky Educational Development Corporation/Big East Educational Cooperative. The day's events include presentations, recreational activities, and representatives from various related organizations/agencies. Participants are given opportunities to attend various hands-on activities and sessions.

H.E.A.R. U.S –Health, Education, Awareness and Respect for our Unique Students is a special day for students of all ages who are deaf or hard of hearing. The day is also special to the parents and professionals who serve these students.

Big East Districts:

- Ashland Independent
- Augusta Independent
- Bath County
- Boyd County
- Carter County
- Elliott County
- Fairview Independent
- Fleming County
- Greenup County
- Johnson County
- Lawrence County
- Lewis County
- Martin County
- Mason County
- Menifee County
- Morgan County
- Paintsville Independent
- Raceland-Worthington Ind
- Robertson County
- Rowan County
- Russell Independent

Did you know. . .

Sheila Anderson facilitates a School Psychologist Cadre and the Speech Language Pathologist Cadre for the Big East Special Education Cooperative?





Mrs. Nancy Hutchinson,
Chief Executive Officer

Mr. Steve Butcher, Chairman,
KEDC Board of Directors

**Kentucky Educational
 Development Corporation**

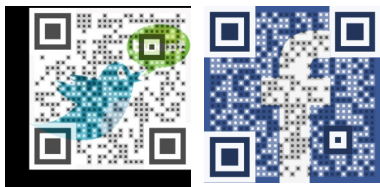
904 Rose Road
 Ashland, KY 41102

606.928.0205
 606.928.3785 FAX
 800.737.0204

118 James Ct. Suite 60
 Lexington, KY 40505

859.255.6411
 859.619.1776 FAX

**VISIT THE
 KEDC WEBSITE**
 WWW.KEDC.ORG



KEDC Ashland Office and Conference Center



KEDC Lexington Office and Conference Center

“KEDC – Your Trusted Partner in Education”.

Picture Gallery 2013





Short on time?

KPC will help.

Looking for that hard to find item, or just don't have time to call and find what you need?

Let us do an email search for you.

We can do an anonymous search for you to get a cost comparison of items and forward you the results.

Be confident that you have current pricing from an awarded KPC vendor.

Making Schools Great by Meeting Model Procurement Requirements

Email: sharon.fields@kedc.org for more details.



Get in the Know with KEDC
Join Us on Social Media



KEDC Text Alerts Text @mrkedc To (606) 618-9654



Spotlight Email



KEDC Facebook



KEDC Twitter

www.kedc.org

Your Trusted Partner in Education



- School Pianos
- Durable Digital Pianos
- Piano Learning Labs
- Keyboards
- Piano Tuning
- Piano Moving
- Fundraising
- Low Price Guarantee

www.gistpiano.com/education

Louisville: (502) 451-1831 x200 | Lexington: (859) 254-8492 x200



MaxiAIDS
PRODUCTS FOR INDEPENDENT LIVING

*Solutions to Improve Your Vision,
Hearing, Mobility & More!*

**For Discount
Use Code:
KEDC Contract
2010.80 on All
School Orders**

KEDC Welcomes MaxiAids - Products for Students with Special Needs

MaxiAids has the largest selection of special education products at the lowest prices

- | | | | |
|-----------------------|-----------------------|----------------------|--------------------|
| • Braille Products | • Low Vision Products | • Telephones | • Medication Aids |
| • Canes for the Blind | • Magnification | • Amplifying Devices | • Talking Products |
| • Large Print | • Support Cushions | • Vibrating Products | • Computers |
| • Lighting | • Reading & Writing | • Mobility Products | • Keyboards |
| • Medication Aids | • Diabetic Products | • Bathroom Aids | |

Call: 1-800-522-6294 • Web: www.MaxiAids.com • Fax: 631-752-0521



We would like to take this opportunity to say ***"Thank You"*** for all your business to the schools that have been buying our HVAC-R equipment and supplies.

We would also like to take this time to invite all the other schools to check out our online catalog at www.johnstonesupply.com. If you prefer a hard copy catalog, come by our store or contact us at our email address or telephone numbers listed below and we will get a catalog right out to you. Your business is appreciated.



JOHNSTONE SUPPLY

LOCALLY OWNED BRANCH STORE

JOHNSTONE ® Your National HVAC-R Source With The Locally Owned Personal Touch
HVAC-R • EQUIPMENT • PARTS • MOTORS • SUPPLIES

5161 Veterans Memorial Lane
P.O. Box 9 (Mail)
Bowling Green, KY 41202-0009
e-mail: store163@johnstonesupply.com

Store (270) 843-4545
Toll Free 1-800-784-4545
Fax (270) 843-8777
After Hours Emergency (270) 991-5110

 **Russwood**
LIBRARY FURNITURE

ESTEY

HON

 COMMUNITY

CERRYMAN



DRENNAN
RONALCO

Louisville, KY 502-491-5009

www.Drennanronalco.com

Continued Service Since 1974
On-site Design Team
Dedicated Project Management

Library Shelving & Furniture

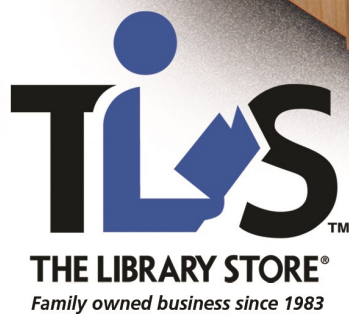
Plastic Laminate Caswork

Wood & Metal Laboratory
Casework & Equipment

Student & Teacher
Desks & Chairs

Cafeteria Tables

CALL TODAY! 800.548.7204



SAVE 15%
on Supplies
SAVE 12%
on Furniture

FREE SHIPPING on FedEx Ground items 70 lbs. or less

Use bid code **KPC** to receive your discounts at thelibrarystore.com



ALLIED CLEANING SOLUTIONS

Partnering With Industry Leaders To Provide Cleaning Solutions Since 1949

We stock multiple brands of cleaning supplies, equipment, paper, and chemicals for the implementation of the cleaning program that is right for you.

Chemical Dispensing ♦ Equipment Paper Products ♦ Floor & Carpet Equipment

Soap Dispenser ♦ Tissue Dispensers ♦ Towel Dispensers

Proud Partner with P&G Professional Products
www.alliedcleans.com

800.628.6140

11600 Commonwealth Drive, Louisville, KY 40299

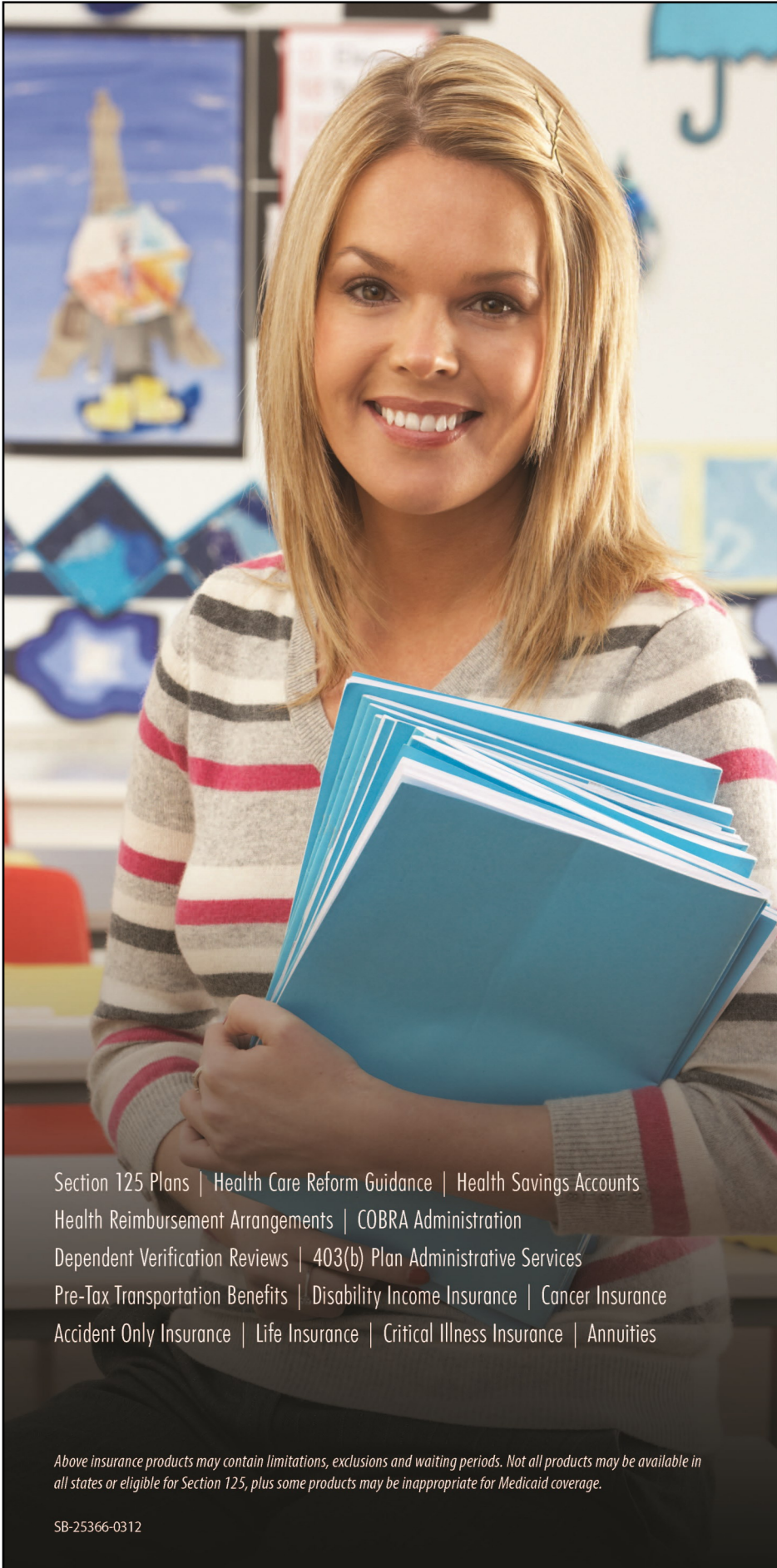


WE'RE BEST IN CLASS!

OUR MISSION IS TO PROVIDE SCHOOLS WITH THE SOLUTIONS AND SERVICES REQUIRED TO OPERATE EFFICIENTLY, EFFECTIVELY, AND SECURELY. OUR HIGHLY TRAINED STAFF DELIVERS AN INDUSTRY STANDARD SPECIFICATION THAT IS TESTED AND GUARANTEED TO WORK.

info@datalink.net
866.200.9946
www.datalink.net





OUR FAMILY, DEDICATED TO YOURS

American Fidelity Assurance Company's history is deeply rooted in the education community. From Section 125 Plans to Disability Income Insurance, we have more than 50 years of experience providing benefits and services developed specifically for school districts and their employees.

Learn more about the value American Fidelity can bring to your district by contacting your local, salaried Account Representative.

Section 125 Plans | Health Care Reform Guidance | Health Savings Accounts
Health Reimbursement Arrangements | COBRA Administration
Dependent Verification Reviews | 403(b) Plan Administrative Services
Pre-Tax Transportation Benefits | Disability Income Insurance | Cancer Insurance
Accident Only Insurance | Life Insurance | Critical Illness Insurance | Annuities

Above insurance products may contain limitations, exclusions and waiting periods. Not all products may be available in all states or eligible for Section 125, plus some products may be inappropriate for Medicaid coverage.

SB-25366-0312



Our Family, Dedicated To Yours.®

Kentucky Branch Office
2525 Harrodsburg Rd. #115
Lexington, KY 40504
800-934-8030

americanfidelity.com